



DOR Roller Vibrators

- ◆ Durable - All Models are Rated for Continuous Duty
- ◆ Selection - 4 Models to From Which to Choose
- ◆ Efficient - Use Less Air Than Other Pneumatic Rotary Vibrators
- ◆ Adjustable - Force and Frequency Can Be Changed by Altering the Air Pressure
- ◆ Effective - Works Well on Fine, Powdery Materials or for Concrete Consolidation



- ◆ Versatile - Can Be Mounted in Any Position and Operate on as Little as 30 PSI
- ◆ Clean - No Oily Mist or Flaking Paint

Denver Concrete Vibrator 1463 W. Alameda Ave. Denver, CO 80223 USA

Toll Free: 800.392.6703 Tel: 303.778.8832 Fax: 303.778.8682

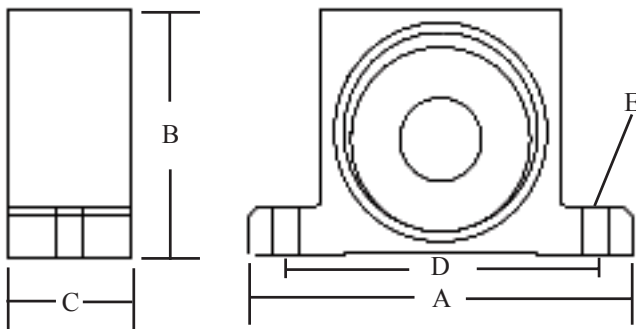
Web Site: www.denverconcretevibrator.com Email: info@denverconcretevibrator.com

Performance Data		AIR PRESSURE								
		30 PSI			60 PSI			90 PSI		
VIBRATOR MODEL	Unbalance	Speed	Flow	Force	Speed	Flow	Force	Speed	Flow	Force
	LB-IN	RPM	CFM	LBS	RPM	CFM	LBS	RPM	CFM	LBS
DOR 50	0.033	21,000	2.7	413	25,000	5	620	29,500	7.2	782
DOR 65	0.050	19,000	3.5	518	22,000	6.9	968	26,000	10.4	1218
DOR 80	0.135	14,000	4.36	754	16,000	9	1295	21,500	13.3	1377
DOR 100	0.490	6,750	47.6	638	9,750	10	1332	11,000	14.5	1726



Ideal For:

- Bins and Hoppers Containing Dry, Powdery Materials or Residual Cleanout
- Clean Environments Such as the Food, Chemical and Pharmaceutical Industries
- Small Shaker Tables for Concrete Molds, Screens, and Floats
- Larger Concrete Form Applications Where a Smooth Finish is Needed



Dimensions		A	B	C	D	E	Inlet/Exhaust
Model	Weight	Length	Height	Width	Bolt Centers	Bolt Hole	Port
DOR 50	0.81 lbs	3.4"	2"	1.2"	2.68"	.28"	1/8"
DOR 65	1.67 lbs	4.5"	2.6"	1.4"	3.54"	.35"	1/4"
DOR 80	2.79 lbs	5.0"	3.2"	1.6"	4.09"	.35"	1/4"
DOR 100	5.72 lbs	6.3"	4"	2.1"	5.12"	.43"	3/8"